

**TTS**  
TRUCK TYRE SPECIALISTS



[www.trucktyrespecialists.co.uk](http://www.trucktyrespecialists.co.uk)





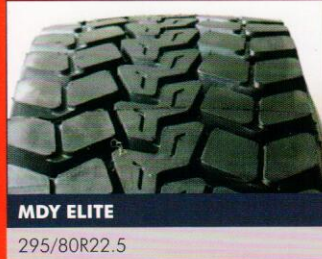
**M729 ELITE**

295/80R22.5



**MDE2 ELITE**

315/80R22.5 295/80R22.5



**MDY ELITE**

295/80R22.5



**MDY3 ELITE**

295/80R22.5



**MDE1**

295/80R22.5



**MTU**

295/80R22.5 11R22.5



**MZT**

295/80R22.5 11R22.5



**MZTLT**

215/75R17.5



**MZAS**

265/70R19.5 285/70R19.5



**MTAJ**

215/75R17.5



**MZE1**

295/80R22.5



**MZY/MZYDT**

11R22.5 295/80R22.5 4 RB



**MZA**

385/65R22.5



**MTS**

385/65R22.5



**MTE2 ELITE**

385/65R22.5



**M748**

385/65R22.5

## Waste Tyre Special

For many years TTS have produced premium quality retreads and remoulds for the haulage industry. TTS have introduced a tyre designed to cope with the unique problems of the waste industry – The Waste Tyre Special. The WTS has many features designed to give optimum performance on vehicles running on waste operations.

18mm deep tread provides long life. The tyre is also designed to be regrooved.

Unique compound gives high mileage and resists tread damage.

Wide grooves help provide traction for off-road operations.



Available in 11R22.5  
295/80-22.5

Specially designed asymmetric tread with wide, solid outer shoulder resists rapid wear.

Wide kerbing band protects sidewall against kerbing damage. Drum tested and approved to J speed rating.

**TTS**  
TRUCK TYRE SPECIALISTS



**RD2+**  
 295/80R22.5  
 315/70R22.5  
 315/80R22.5



**RD-HM**  
 295/80R22.5  
 315/70R22.5  
 315/80R22.5



**MIXMASTER**  
 295/80R22.5  
 315/80R22.5



**RD4 (BUS & COACH)**  
 295/80R22.5  
 315/80R22.5



**RDY-HM**  
 295/80R22.5  
 315/80R22.5



**RZYHM**  
 11R22.5  
 295/80R22.5  
 315/80R22.5



**RZE-HM**  
 295/80R22.5  
 315/80R22.5



**ESD**  
 295/80R22.5  
 315/80R22.5



**KZT**

10R17.5	245/70R19.5
205/75R17.5	265/70R17.5
215/75R17.5	265/70R19.5
225/75R17.5	285/70R19.5
235/75R17.5	9.5R17.5
245/70R17.5	



**U729**

12R22.5	295/80R22.5
255/70R22.5	305/70R19.5
275/70R22.5	305/70R22.5
275/80R22.5	315/70R22.5
295/60R22.5	315/80R22.5



**UZYL**

10R22.5	295/80R22.5
11R22.5	315/80R22.5
205/75R17.5	9.5R17.5
215/75R17.5	



**Z12**

205/75R17.5	245/70R19.5
215/75R17.5	265/70R19.5
235/75R17.5	285/70R19.5
245/70R17.5	9.5R17.5



**ZE-HM**  
 315/70R22.5



**UDY3**  
 295/80R22.5



**TE**  
 385/55R22.5    385/65R22.5



**SSY**  
 385/65R22.5    425/65R22.5

# TUFF+

*A new product to add to our extensive tread range, the new TUFF+ is designed to withstand those arduous on/off road conditions the waste haulage industry is subjected to.*



- 21mm deep tread pattern provides superior traction
- High quality rubber compound gives excellent mileage
- Regroovable
- Load rating: 152/148
- Speed rating: J Rated
- Available in 295/80-22.5

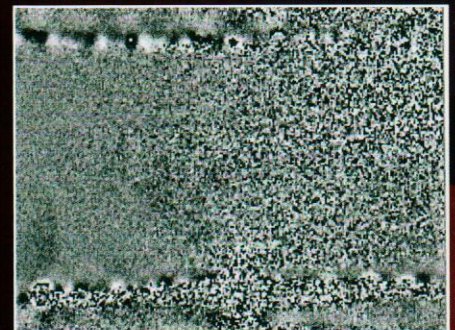
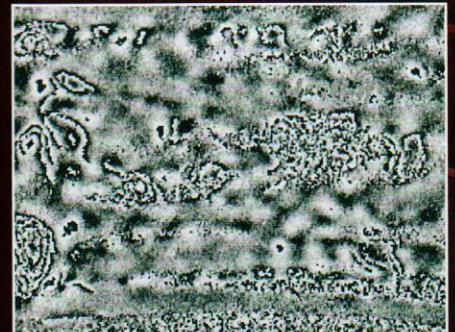


## **TTS** get to the heart of your tyres

To ensure that a retread tyre will offer the best possible performance, any defects must be identified. One of the most common defects in a radial tyre are separations within the casings, particularly in super singles due to the high level of lateral scrub. Unfortunately, these are also the hardest to find, as they are often deep within the belt construction under the tread.

As a result of new technology TTS were the first retreaders in the UK to introduce Shearography inspection of their production. This non-destructive test enables the detection of these invisible separations together with other defects. Laser video cameras within the machine scan the tyre, first at atmospheric pressure then under a partial vacuum. Any defects in the scanned area result in a microscopic deformation due to the alternating pressure. The laser records these microscopic deformities, which are processed by an advanced analysis software programme.

The results are displayed on a VDU screen and are stored on a database for future reference. The introduction of this unique technology has enabled TTS to offer the best possible performance and reliability with their products as a result of the elimination of previously hidden defects in the casing. TTS do truly now know your tyres inside out.



**Truck Tyre Specialists Ltd** Warne Road Winterstoke Commercial Centre  
Weston-super-Mare BS23 3UU Tel: 01934 622626 Fax: 01934 623203

**TTS**  
TRUCK TYRE SPECIALISTS